

WORLD TRADE ORGANIZATION

RESTRICTED
G/RO/W/71
8 November 2001

(01-5521)

Committee on Rules of Origin

Original: English/
Spanish

ISSUE NO. 11BIS OF CHAPTERS 82 AND 83

Proposal by Mexico

The following communication, dated 30 October 2001, has been received from the Permanent Mission of Mexico.

Issue No. 11*bis* establishes the rule of origin for subheading 8302.60 (automatic door closers, and parts thereof). For these products, Mexico proposes to divide the subheading in three subgroups: one group for automatic electric door closers, other group for parts and the last one for other products; each one with an specific rule, as follows:

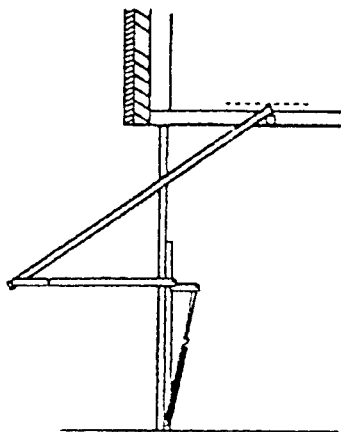
8302.60 Automatic door closers, and parts thereof

- a. Automatic electric door closers
Rule of origin proposed: CTSH
- b. Parts
Rule of origin proposed: CTH
- c. Other
Rule of origin proposed: CTH

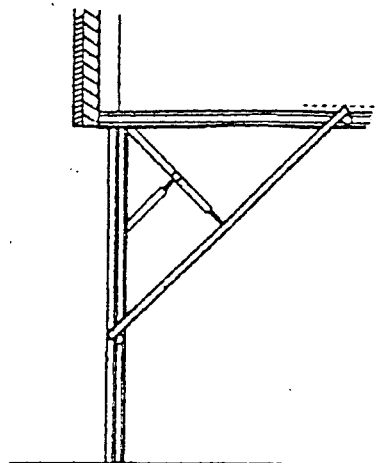
This proposal reflects the productive process of electric garage openers, which are included on group (a). The manufacturing of garage openers is not only the joint of a spring with other few parts, as it was indicated for some delegations in a previous meeting, but it is a complex manufacturing process with a wide variety of mechanical and electrical parts involved. The attached document is a diagram of the actual manufacturing process of these products, which constitutes a clear explanation of the complexity of the required process.

1

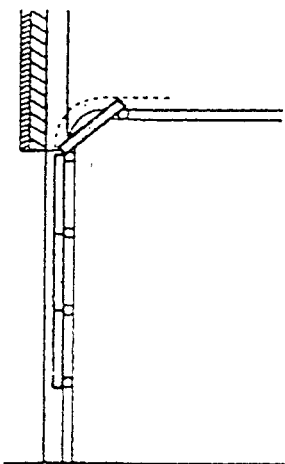
A



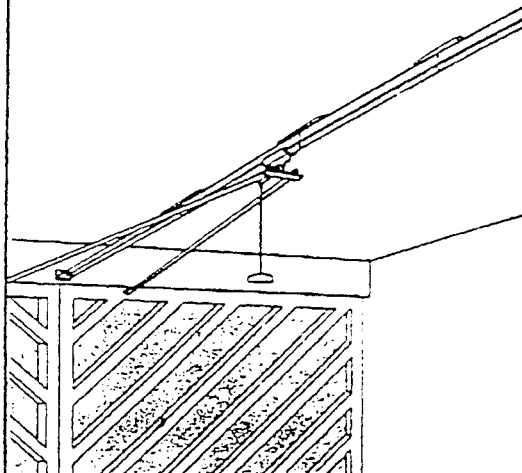
B



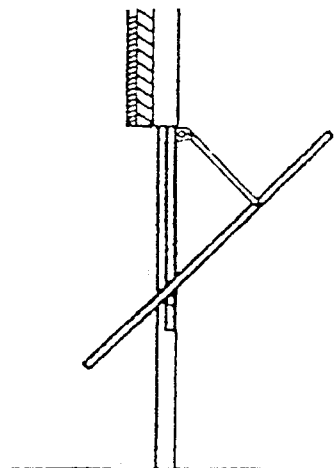
C



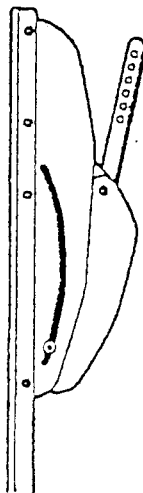
D



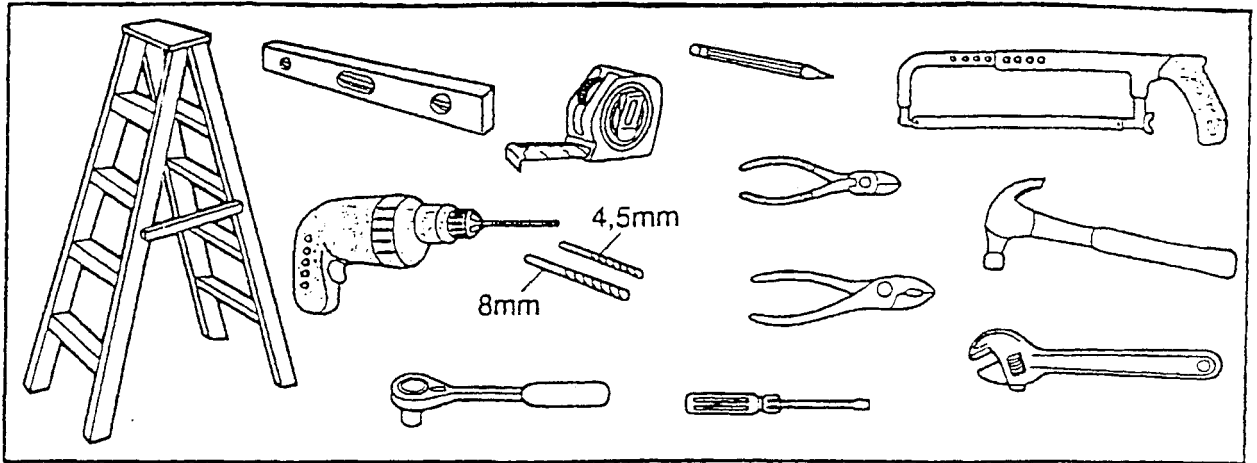
E



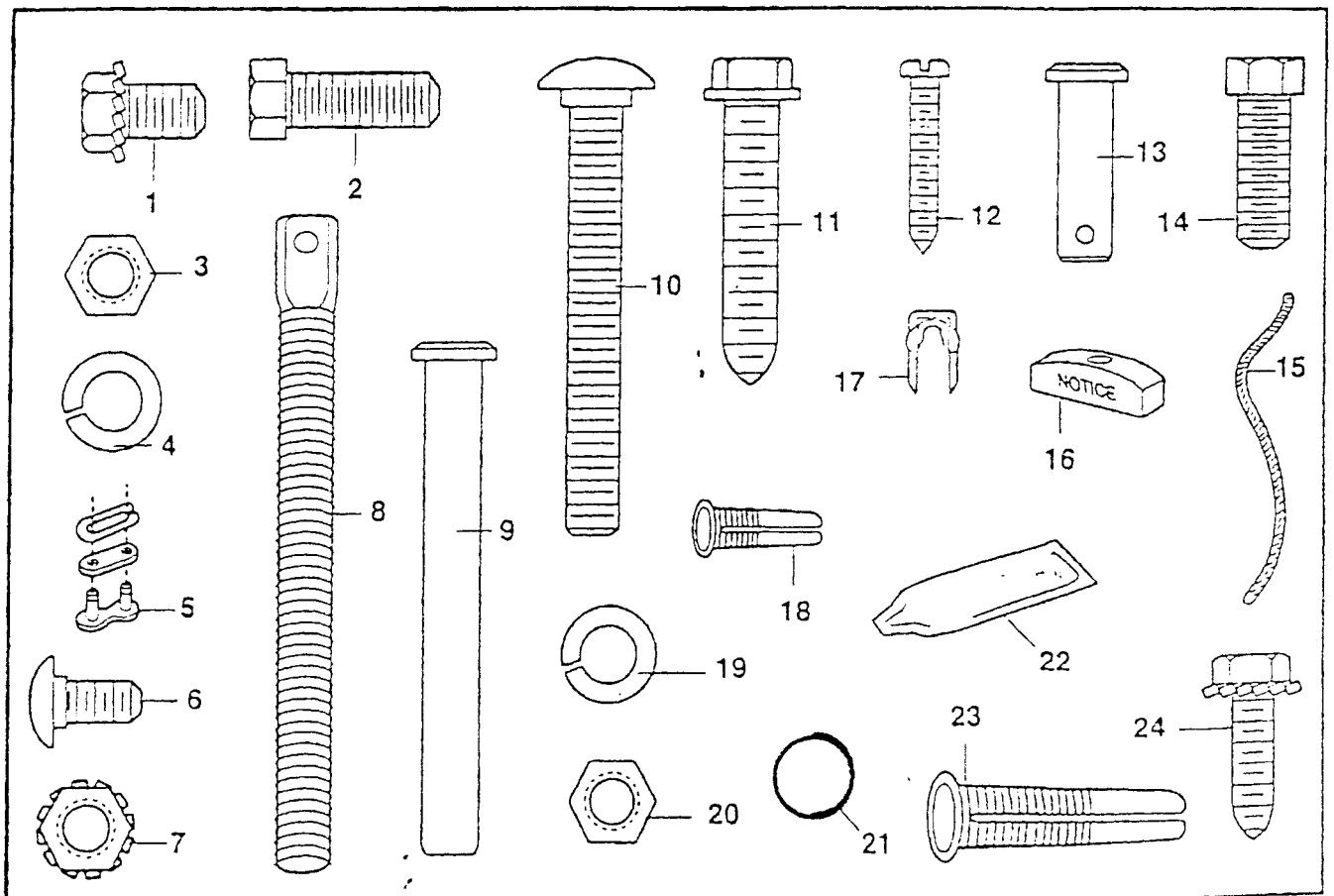
F



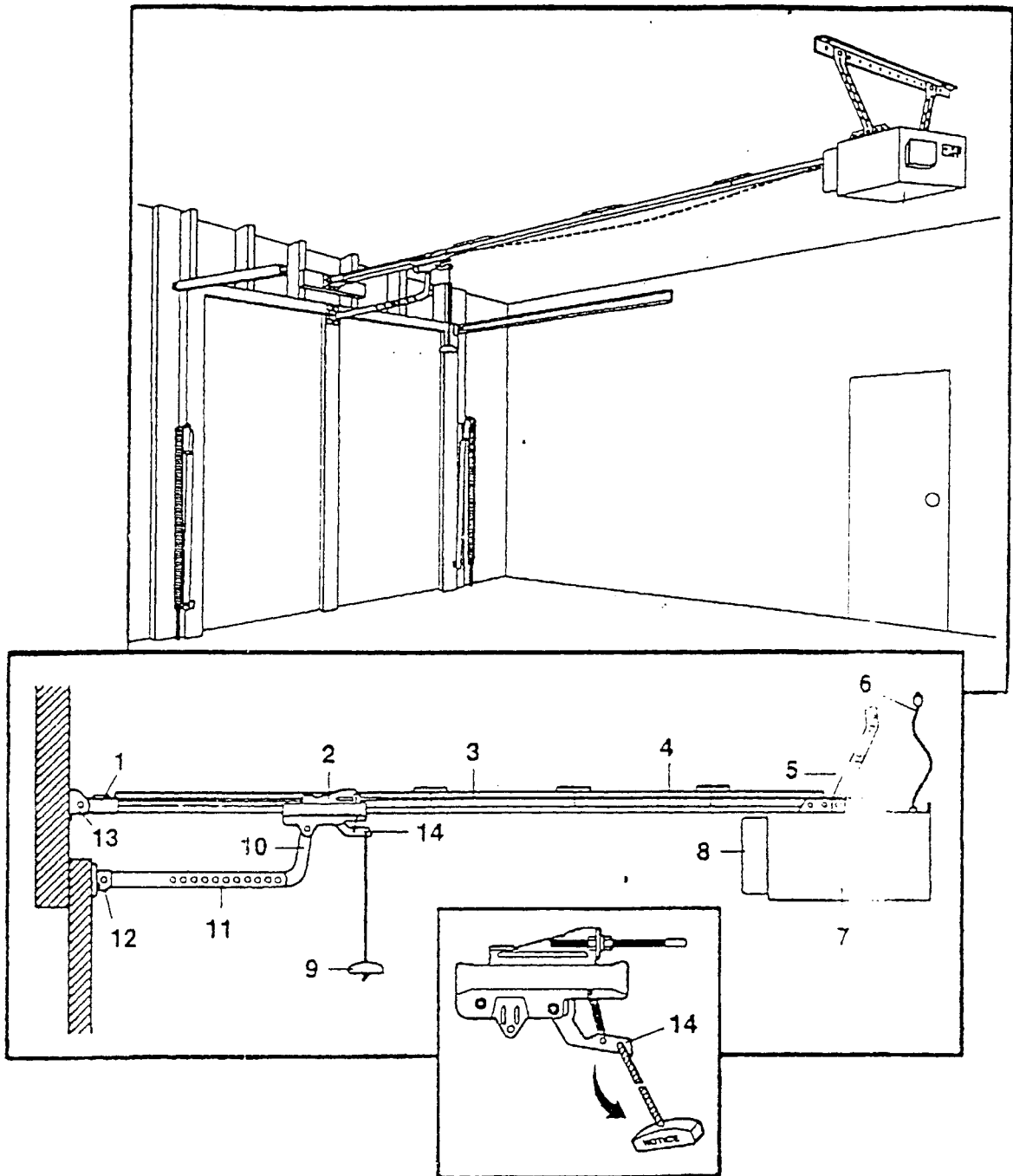
2



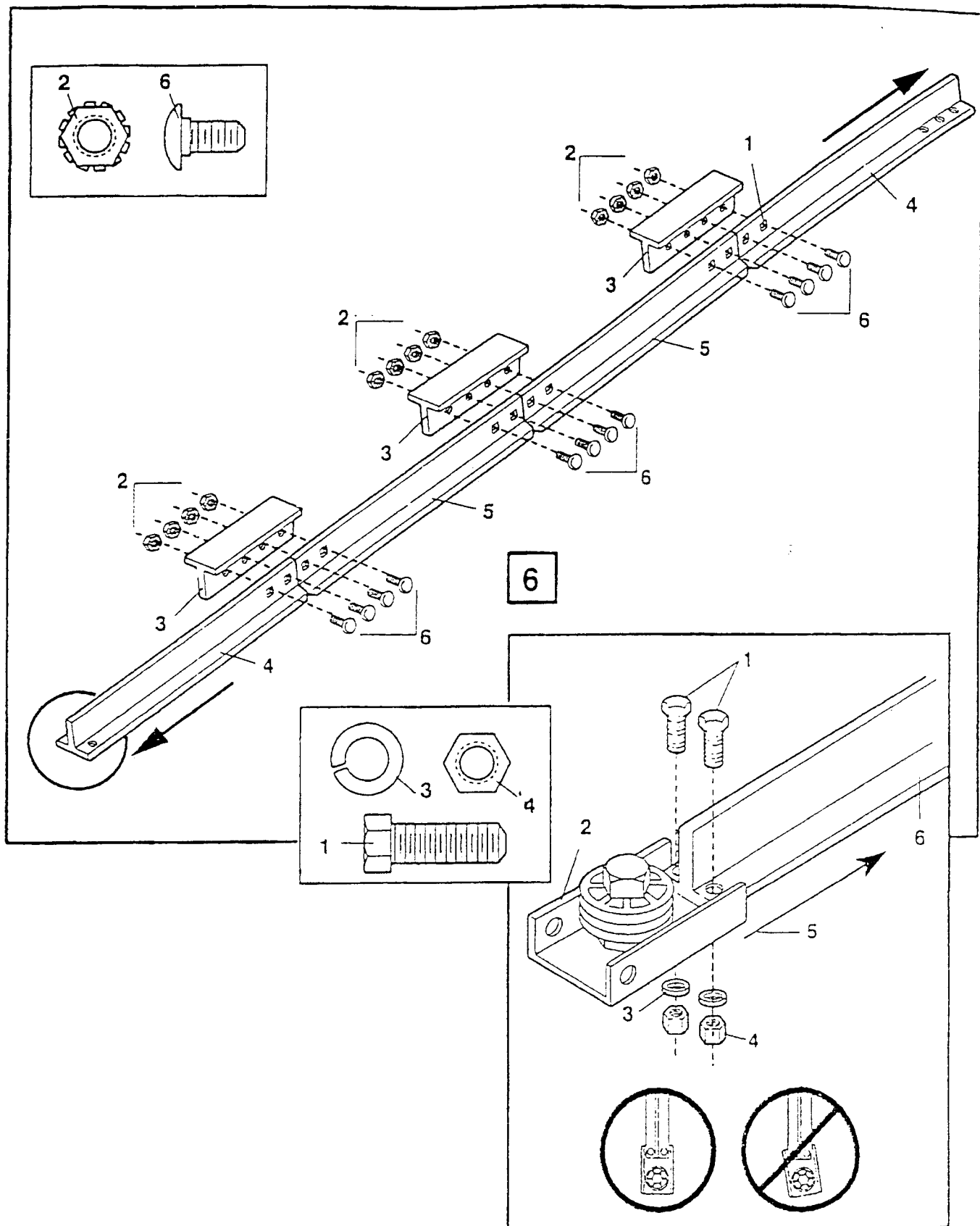
3



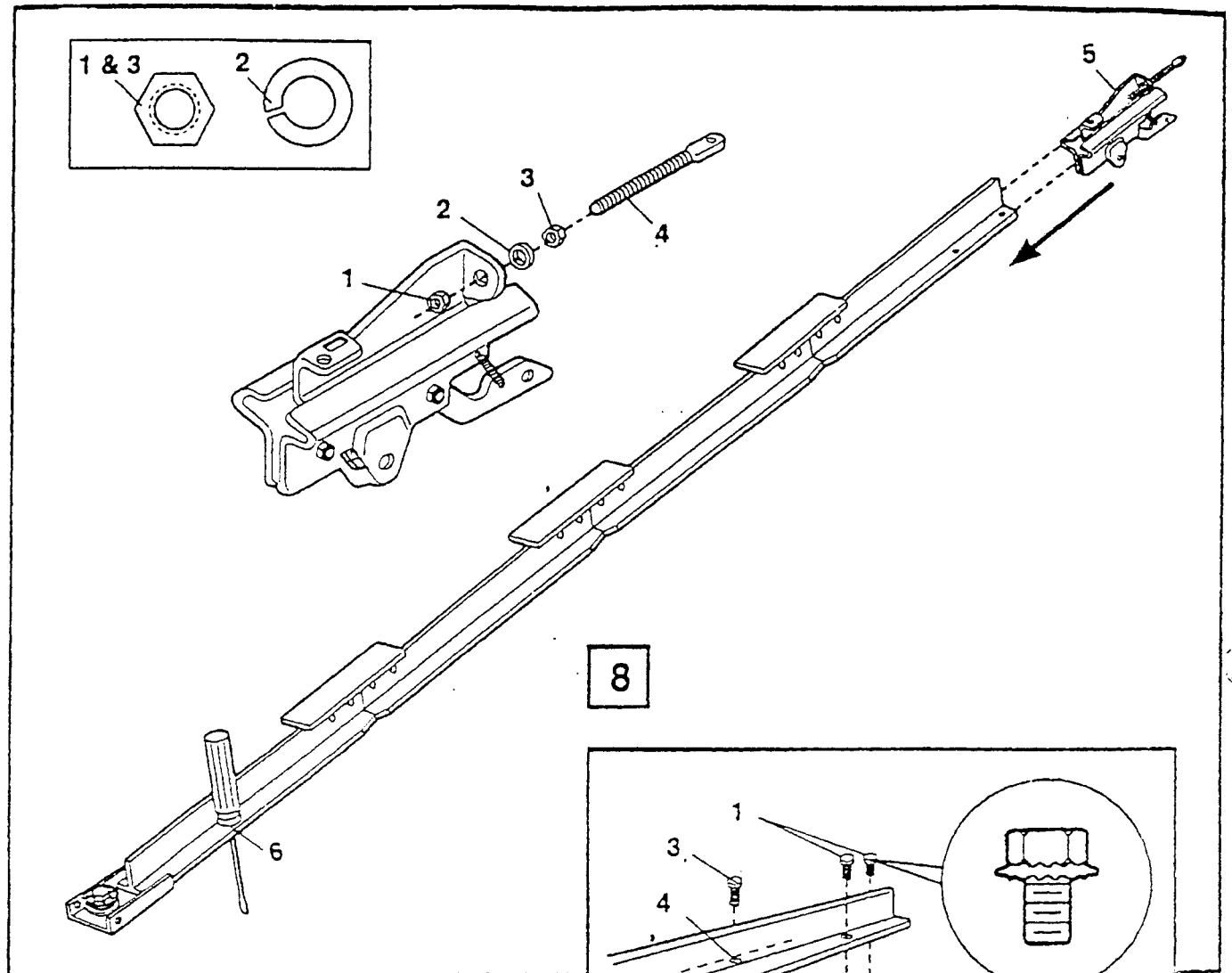
4



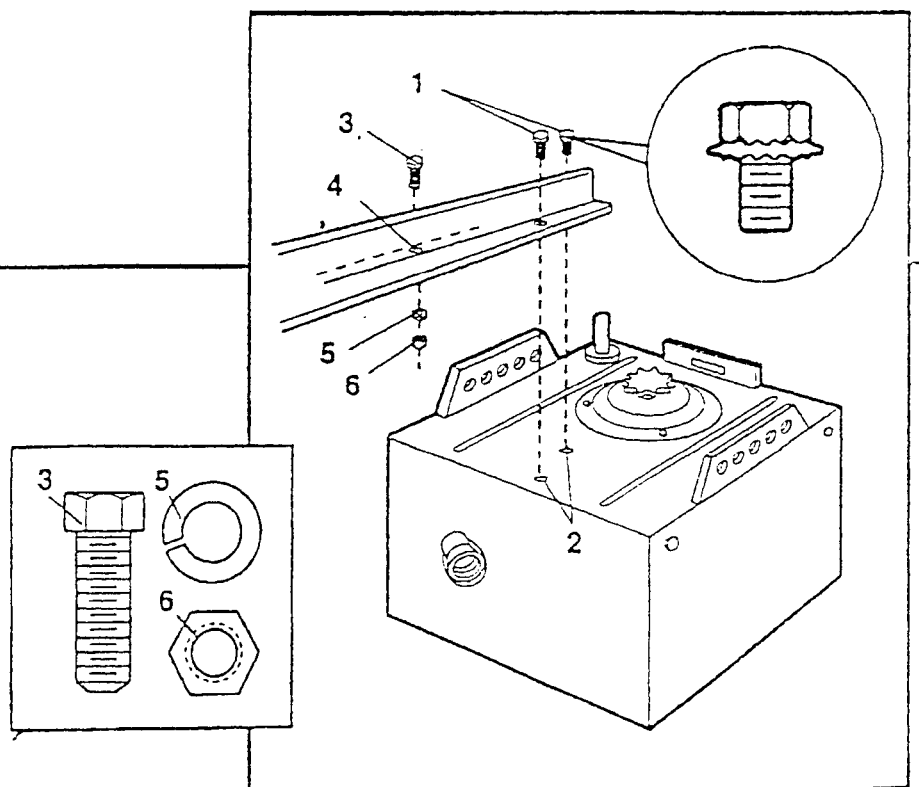
5



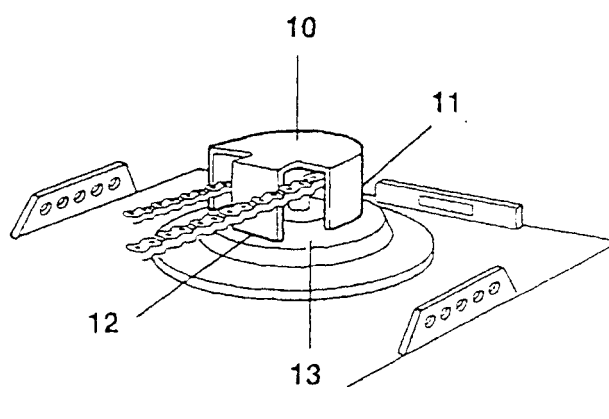
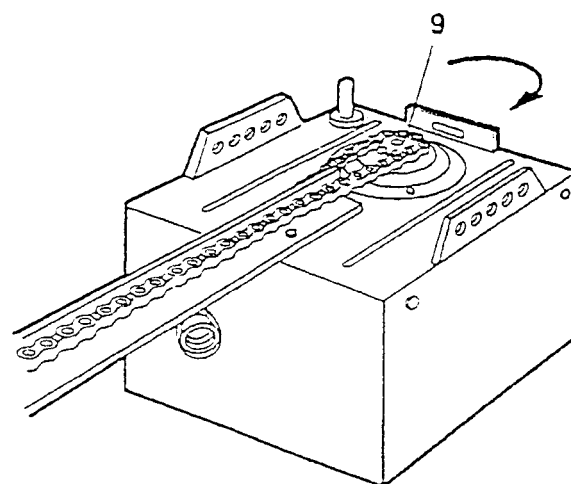
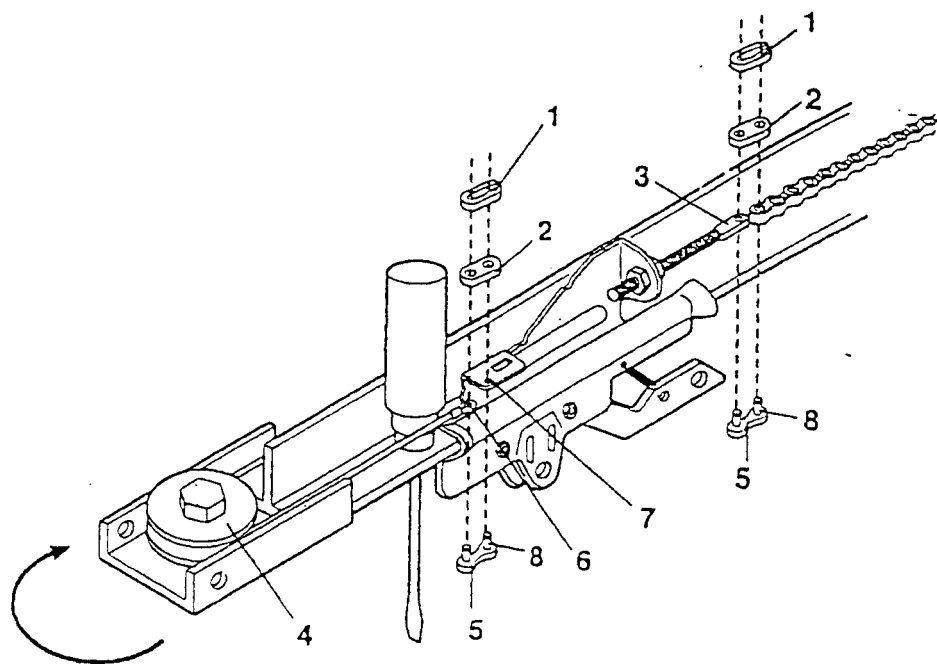
7



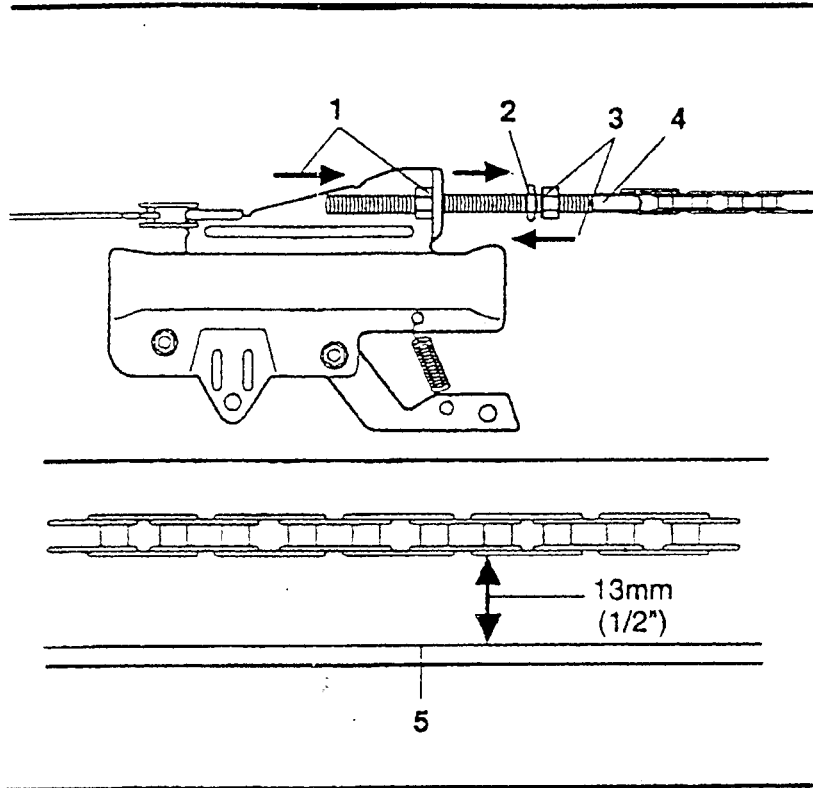
8



9



10



11

